

Girder Clamps

Product Code: R861-104 / R861-105 / R861-106

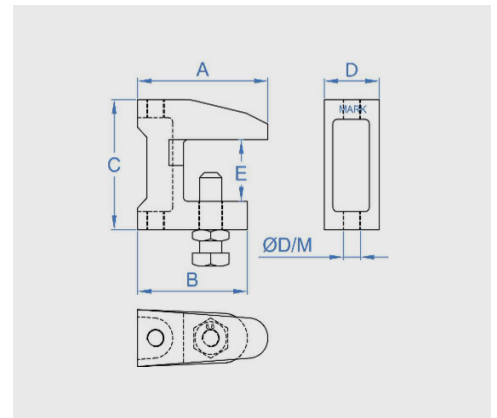
Characteristics

- Popular fixing for connecting threaded rod to steel girders, without penetrating existing steelwork
- Simply tighten clamp bolt to recommended torque to fasten
- High suspension capacity
- Suitable for connecting to a wide range of structural steel profiles
- Applications: threaded rod anchoring, pipework suspension, suspended ceiling fixing



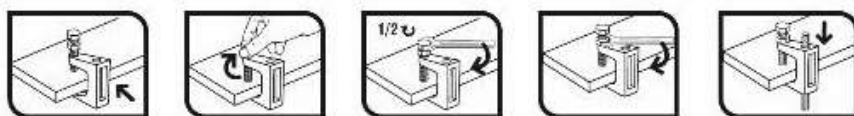
Installation data

Product Code	R861-104	R861-105	R861-106
A	38mm	44mm	57mm
B	35mm	41mm	48mm
C	37mm	42mm	54mm
D	18mm	21mm	24mm
E	20mm	20mm	25mm
Ø Hole	9mm	11mm	13mm
Installation torque	10Nm	15Nm	20Nm
Max recommended load	120kg	250kg	350kg



Installation procedure

Step 1	Place the clamp on the profile
Step 2	Screw the clamp's bolt manually
Step 3	With the help of a wrench tighten the bolt 1/2 turn
Step 4	Screw the locknut manually and tighten with a wrench 1/8 turn
Step 5	Add the element to be suspended from the clamp



Material	Coating
A Steel	Z Zinc-plated $\geq 19\mu\text{m}$

