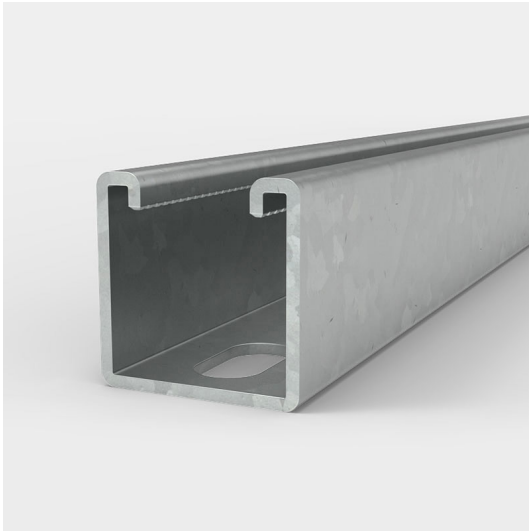


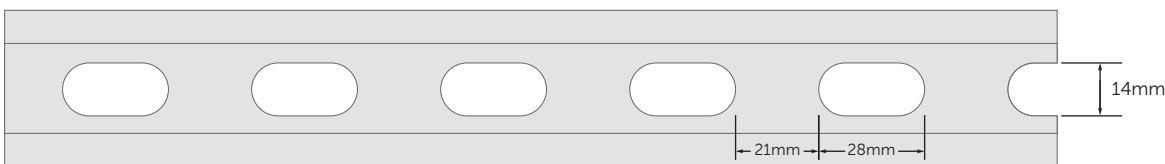
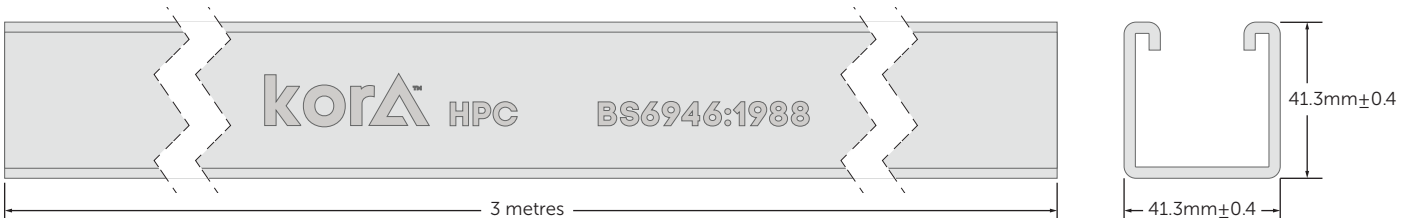
## 41mm x 41mm x 3m Heavy Gauge Slotted HDG Channel

Product Code: T021-523



Description
Slotted steel back to back channel hot dip galvanised
Material
2.5mm thick steel
Dimensions
41mm x 41mm x 3m
Finish
Hot Dip Galvanised $\geq 55\mu\text{m}$

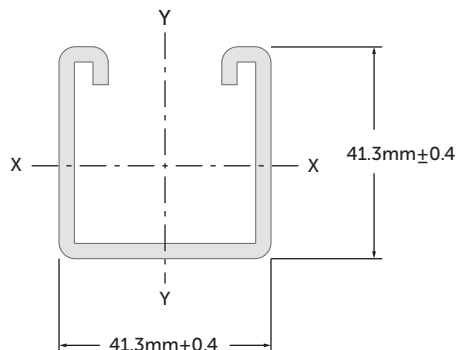
- Pack quantity 50 - Supplied separately
- Conforms to BS 6946:1988
- Each length is marked Kora HPC for traceability
- Teeth for ease of channel nut installation
- Very high grade galvanisation



### Application

- Suspend services including electrical, pipework, sprinklers and ventilation systems.
- Enable frames to be built as freestanding units for supporting building services.
- Cut to required length for convenience, protect cut ends using a galvanising paint.

## Load Data



### Section properties

Area	3.45cm <sup>2</sup>
Weight	2.56kg/m
I x-x	7.59cm <sup>4</sup>
Z x-x	4.65cm <sup>3</sup>
r x-x	1.48cm
I y-y	9.42cm <sup>4</sup>
Z y-y	5.41cm <sup>3</sup>
r y-y	1.65cm

Length (mm)	Max Uniform Load (kg)	Deflection at Max Load (mm)	Column Max Load (kg)
500	860	1.58	4580
1000	430	3.69	3080
1500	285	7.96	2320
2000	215	13.96	1860
2500	170	21.24	1560
3000	140	29.92	-

Material	Coating
<p><b>A</b></p> <p>Steel</p>	<p><b>Z</b> ZINC</p> <p>Hot Dip Galvanised Thickness ≥ 55µm</p>