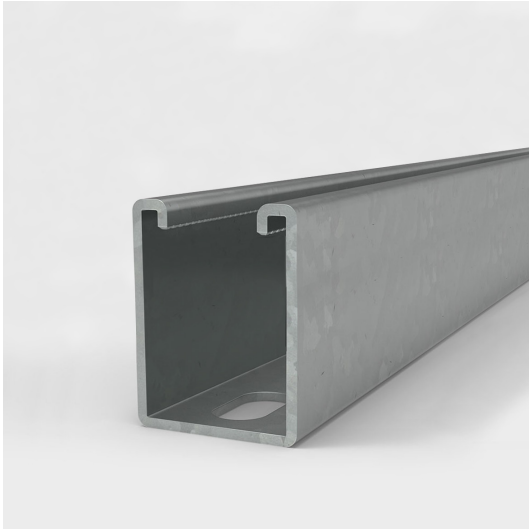


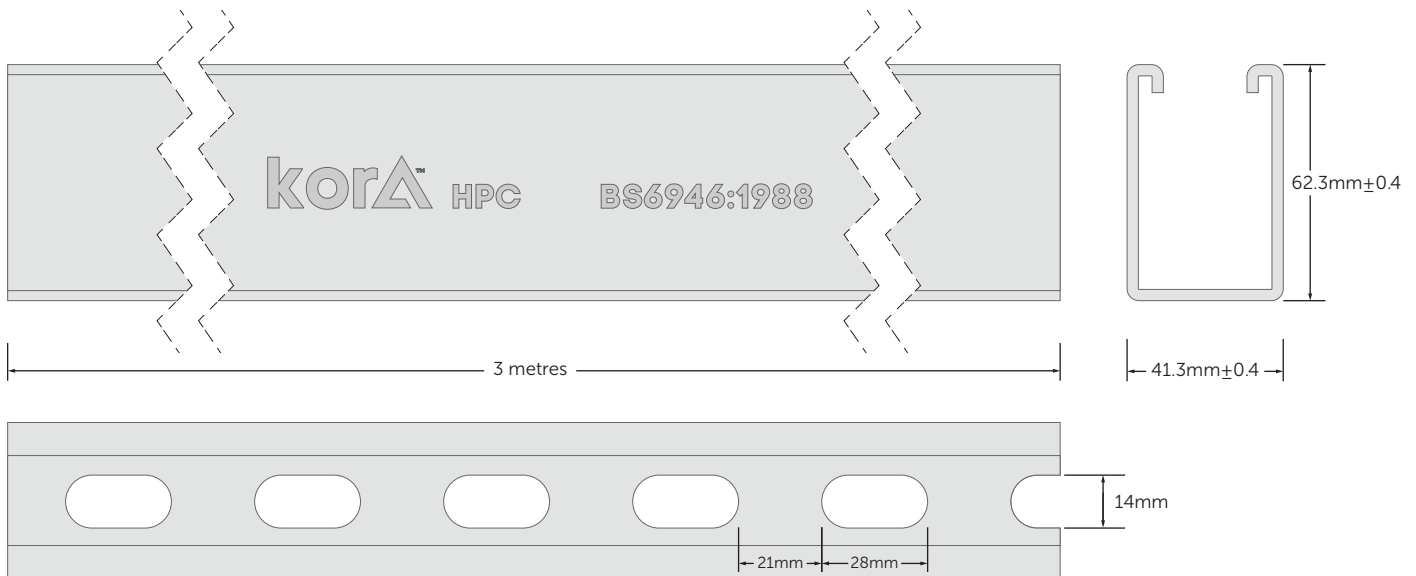
41mm x 62mm x 3m Heavy Gauge Slotted Pre-Galv Channel

Product Code: T021-823



Description
Slotted steel channel pre-galvanised
Material
2.5mm thick steel
Dimensions
41mm x 62mm x 3m
Finish
Pre-Galvanised Zinc-plated $\geq 19\mu\text{m}$

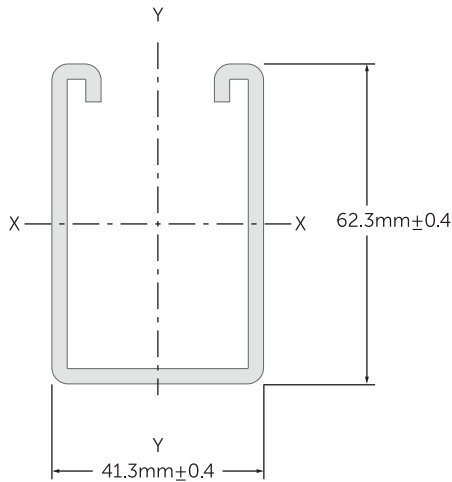
- Pack quantity 50 - Supplied separately
- Conforms to BS 6946:1988
- Each length is marked Kora HPC for traceability
- Teeth for ease of channel nut installation
- Very high grade galvanisation



Application



- Suspend services including electrical, pipework, sprinklers and ventilation systems.
- Enable frames to be built as freestanding units for supporting building services.
- Cut to required length for convenience, protect cut ends using a galvanising paint.

Load Data



Section properties	
Area	4.49cm ²
Weight	3.50kg/m
I x-x	21.46cm ⁴
Z x-x	8.78cm ³
r x-x	2.19cm
I y-y	13.65cm ⁴
Z y-y	7.51cm ³
r y-y	1.74cm

Length (mm)	Max Uniform Load (kg)	Deflection at Max Load (mm)	Column Max Load (kg)
500	1320	3.18	2050
1000	827	3.48	1560
1500	550	6.80	1080
2000	413	11.68	800
2500	329	17.92	630
3000	274	25.60	520

Material	Coating
 A Steel	 Z ZINC Pre-Galvanised Zinc-plated ≥ 19µm